



**Acme Sanitary Ware Co. Ltd.**


1/F, Acme Building, 22-28 Nanking Street, Kowloon, Hong Kong

Tel: 2388 7171 Fax: 2710 8012

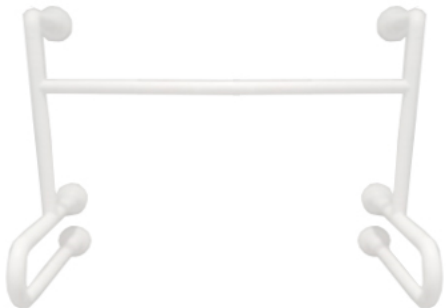
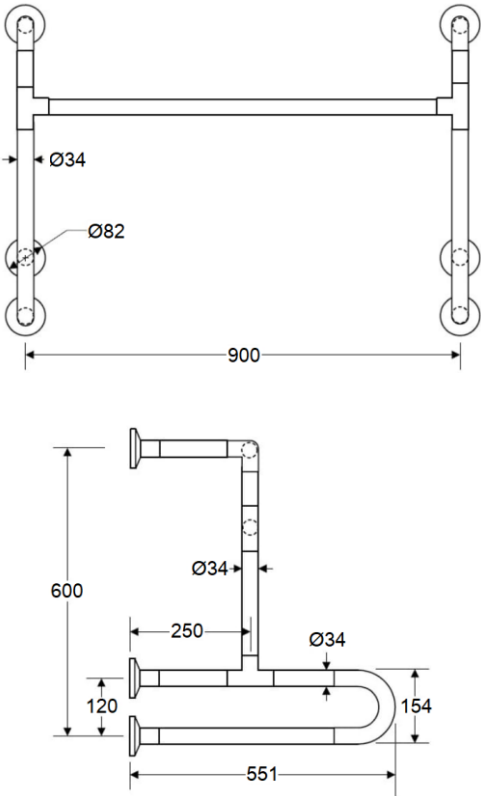

Email: acme@acmesanitary.com.hk

Website: www.acmesanitary.com.hk

EMCA

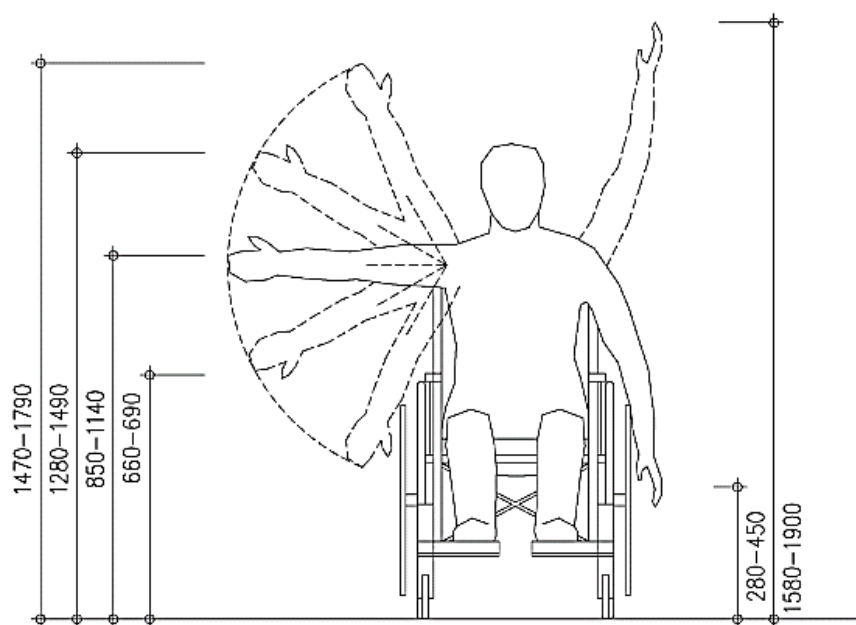
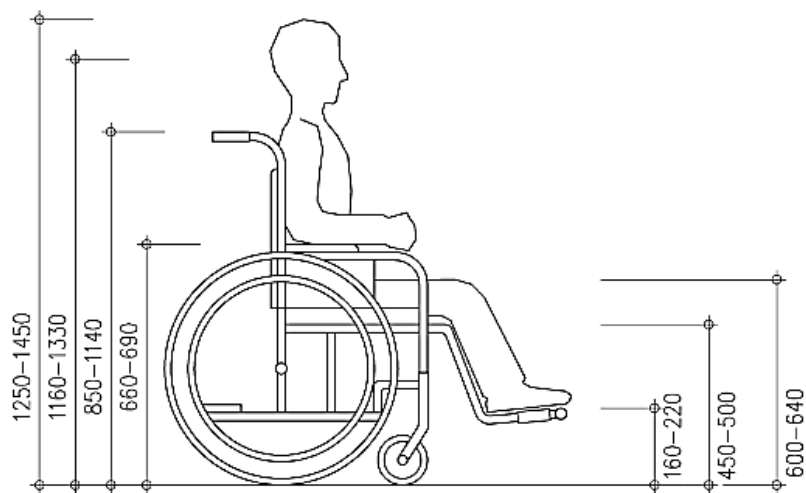
PROJECT		REF		REV	ITEM CODE	
LOCATION		DATE			PAGE	

## SANITARY WARE SPECIFICATION SHEET

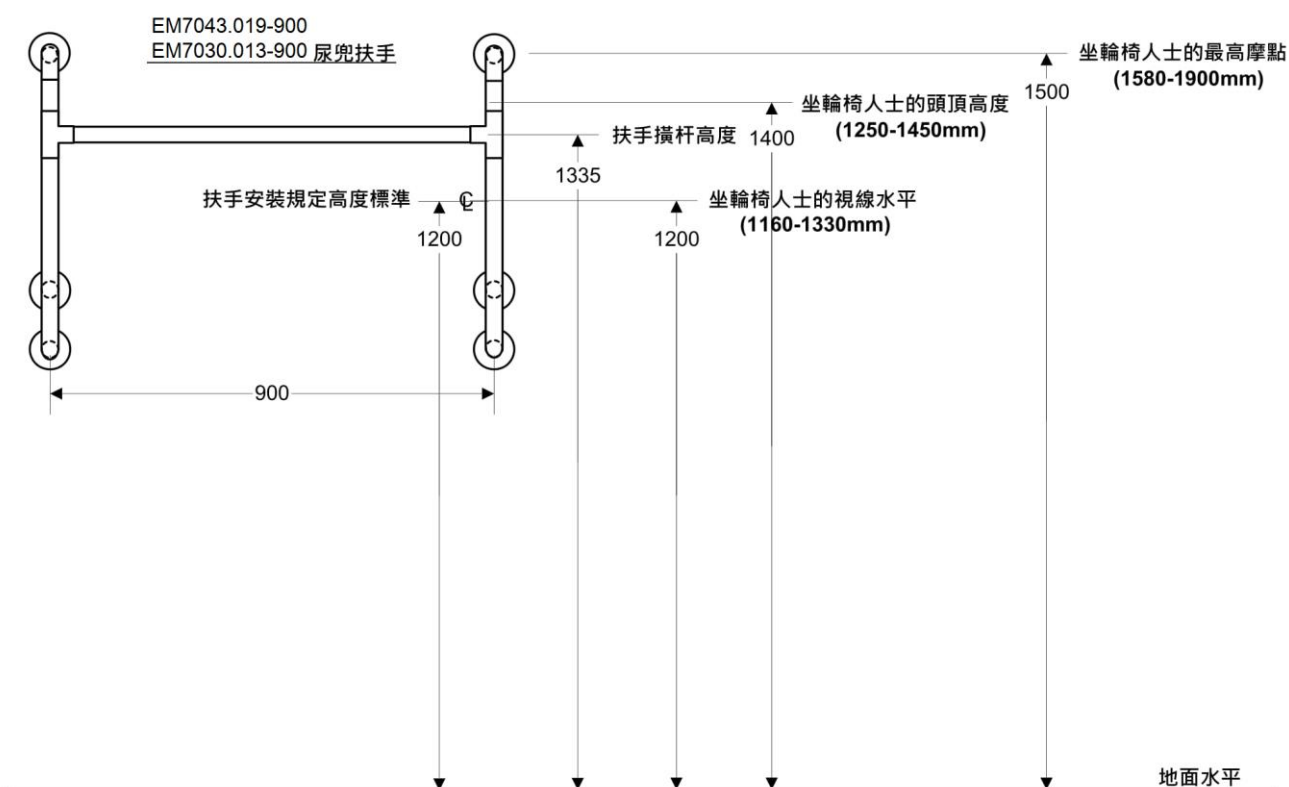
Item Descriptions	EMCA (Taiwan) Ø34 mm 2U type ABS coated aluminium urinal grab bar ; GB 175-2007 ; capable of carrying a <b>static loading test 150kg</b> ; test report J24249r1 ; complied with Barrier Free Access 2008	<p>Illustration/ Drawing</p>  
Dimensions	L900 x W551 x H600 mm	
Model	EM7043.019-900	
Material / Color	ABS coated aluminium / White	
Manufacturer	EMCA (Taiwan)	
Source	Acme Sanitary Ware Co. Ltd Mr. Eric Wong/ Mr. Don Yuen	
Contact Tel/Fax E-mail Website	(852) 2388-7171 / (852) 2710-8012 acme@acmesanitary.com.hk www.acmesanitary.com.hk	
 <div data-bbox="639 1585 890 1666" data-label="Image"> </div> <div data-bbox="635 1736 919 1933" data-label="Text"> <p>The rail was smooth ABS tube with ovally knobbles impressed on surface offers better grip for wet hands or damp conditions.</p> </div>		

Note:

\* All information of the above is for the reference only. No prior notice is made if any changes.



Extracted from Design Manual  
- Barrier Free Access 2008  
(Amendments in June 2019)



The above information is for reference only.



Nutek Systems  
Tel: +852 2801 1171



# Nutek Systems

A, Universal Industrial Centre, 23-25 Shan Mei Street, FO TAN, N.T., HONG KONG  
info@nuteksystems.com www.nuteksystems.com

## Test Report

TITLE : Loading Test

REPORT NO. : J 24249r1  
(This test report is issued to supersede the one of ref. J 24249)

DESCRIPTION OF SAMPLE<sup>1</sup> : Fixed grab bar ABS coated aluminium for urinal

SAMPLE SUBMITTED BY<sup>1</sup> : Acme Sanitary Ware Co., Ltd.  
1/F, Acme Building,  
22-28 Nanking Street  
Yau Ma Tei, Kowloon  
Hong Kong

COUNTRY OF ORIGIN<sup>1</sup> : Taiwan

BRAND<sup>1</sup> : EMCA

MODEL<sup>1</sup> : EM7043.019-900

BODY MARKING : /

METHOD OF TESTS : Loading test

PERIOD OF TESTS : 11 May, 2019

<sup>1</sup> – Information provided by client

### RESULTS: (apply only to the sample tested)

#### 1. LOADING TEST

The sample was installed onto a concrete wall in its normal application (cement to GB 175-2007). A test load was applied to the mid point of the sample which was then examined for any signs of damage.

ID	Weight/ downward load (kg)	Test duration (min)	Break/failure/ deflection/crack
Sample	150	30	Nil

Remark: Pass

Date: 22 Jul., 2019

Authorized signature:

Nutek Systems is a testing agency,  
accepted by the Water Supplies  
Department, for testing water supply  
fittings.

NG DICK TIK LUN  
(Test Engineer)